

SIGMA F.O. XENON OR LED OTO AND OPHTHALMO SETS



31527,
31530,
31529

31513,
31524,
31525,
31526

FIBRE OPTIC
OR F.O. LED

High quality pocket diagnostic instruments designed for professional use in ENT and ophthalmoscopy. Light weight and manufactured from impact resistant re-enforced plastic. Supplied in deluxe rigid plastic case or pouch with multilingual manual (GB, FR, IT, ES, PT, DE, GR, PL, RO, Arabic). Sigma otoscopes are compatible with Gima mini speculum (31485-8, 31491-2, 31495-9).

Sigma otoscopes

High quality materials and top-notch workmanship ensure excellent reliability in every examination.

- swivel type window with 3X magnification lens for sharp images and minimal reflection
- distal fibre optic illumination with super bright Xenon/Halogen or LED light
- insufflation port for pneumatic testing of tympanic mobility (optional connector port 31532 and insufflation bulb 31483)

- standard or rechargeable handle. Optional metal endcap (31588) can convert any standard Sigma handle into rechargeable version.

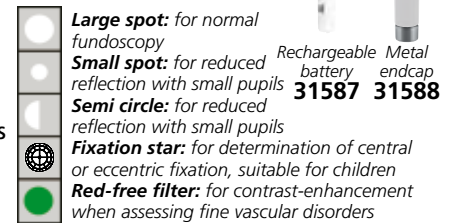
Sigma ophthalmoscopes

High quality optics in mini format makes this instrument ideal for house calls and rounds.

- super bright Xenon-Halogen or LED light
- 5 different apertures for almost all ophthalmic examinations
- range of lenses from -20 D to +20 D

+	1	2	3	4	6	8	10	15	20
-	1	2	3	4	6	8	10	15	20

Colour coded 18 lenses
for excellent resolution



Large spot: for normal funduscopy

Small spot: for reduced reflection with small pupils

Semi circle: for reduced reflection with small pupils

Fixation star: for determination of central or eccentric fixation, suitable for children

Red-free filter: for contrast-enhancement when assessing fine vascular disorders

Rechargeable battery 31587
Metal endcap 31588

SIGMA F.O. OTOSCOPES AND OPHTHALMOSCOPES 2.5V - standard handle

OTOSCOPES*			OPHTHALMOSCOPES		
Black	Blue	Purple	Black	Type	Packing
31524	31523	31511	31530	Xenon-Halogen	Pouch
31525	-	-	31527	Xenon-Halogen	Case
31513	-	-	-	LED	Pouch
31526	31518	-	31529	LED	Case
SIGMA F.O. LED OTOSCOPE AND OPHTHALMOSCOPE 2.5V - rechargeable** handle with battery					
31580	Otoscope with rechargeable handle and battery - black			LED	Pouch
31582	Ophthalmoscope with rechargeable handle and battery - black			LED	Pouch

*Otoscope sets are supplied with 14 disposable specula (7 with Ø 2.5 mm, 7 with Ø 4 mm)

**Rechargeable handle can be used with "AA" standard batteries or rechargeable battery code 31587 (needs charging station code 31586)
Full battery charge in 2.5 hours. Charging station can be connected to PC or laptop via standard Type C USB cable (not included)

GIMA code	SIGMA F.O. OTO-OPHTHALMOSCOPE SETS*** 2.5V - black	Type	Packing
31533	Oto-ophthalmoscope set with 1 handle	Xenon-Halogen	Case
31528	Oto-ophthalmoscope set with 2 handles	Xenon-Halogen	Case
31534	Oto-ophthalmoscope set with 2 handles	LED	Case
31584	Oto-ophthalmoscope set with 2 rechargeable handles and batteries	LED	Case

***Oto-ophthalmo sets are supplied with oto and ophthalmo head, 1 handle (31533) or 2 handles (31528, 31534, 31584), 14 disposable specula (7 with Ø 2.5 mm, 7 with Ø 4 mm), 2 rechargeable batteries (31584)

GIMA code	SPARES AND ACCESSORIES	GIMA code	CHARGING SYSTEM
34485	Otoscope bulb - Xenon-Halogen 2.5 V	31586	Charging station
31531	Ophthalmoscope bulb - Xenon-Halogen 2.5 V	31587	Rechargeable battery - spare
31532	Pneumatic connector port	31588	Metal endcap
31483	Insufflation bulb		



31511



31518



31527,
31529



31533



31528,
31534, 31584



31586
Charging station

SIGMA-C LED OTOSCOPES

- 31591 SIGMA-C LED OTOSCOPE - black - pouch
- 31592 SIGMA-C LED OTOSCOPE - blue - pouch
- 31593 SIGMA-C LED OTOSCOPE - purple - pouch

- made of light weight impact resistant re-enforced plastic and highly corrosion resistant stainless steel material for exterior finish

- swivel type window with 3X magnification lens for sharp image and minimal reflection

- optional insufflation port for pneumatic testing of tympanic mobility (needs codes 31532 and 31483)

- compatible with Gima ear specula 31485-8, 31491-2, 31495-9

- 50.000 hours lifetime

- extended battery life of 50 hours

- colour temperature 5,800 K, CRI>78 ensures real colour.

Supplied in a pouch with 14 specula (7x2.5 mm, 7x4.0 mm) in transparent tube



31591

31592

31593

Multilingual manual:
GB, FR, IT, ES, PT, DE,
GR, RO, PL, Arabic.

31591